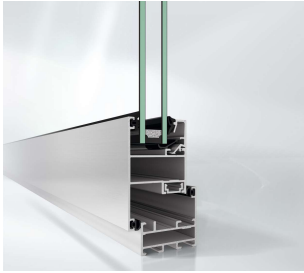


SCHÜCO

Schueco AWS 50.NI
High performance window system





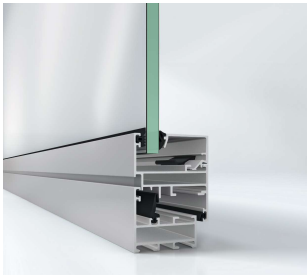
Schueco AWS 50.NI

High performance window system

The Schueco AWS 50.NI system offers extensive solutions for a wide range of requirements without the need for thermal insulation. This is based on the combination of functional properties and architectural design freedom in perfectly tailored components, for example, the combination of narrow face widths with concealed fittings for inward and outward-opening windows. The high level of flexibility of the system enables a variety of uses such as a punched opening, ribbon window, or in combination with Schüco sliding systems.

Wide choice of typologies

Enjoy a virtually unlimited range of window system solutions that may be implemented. Thanks to the rich variety of inward and outward opening options including projected side hung, side hung, projected top hung, double vent and bottom hung window.



Vent brake function

This integrated feature holds the window open at a desired angle which helps the user to decide the amount of opening needed for ventilation.

Extended opening for cleaning

The side-hung window comes with an integrated, adjustable fitting that allows the window opening to be extended, making cleaning easy.



Safety devices

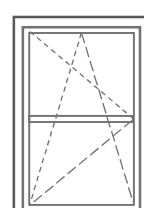
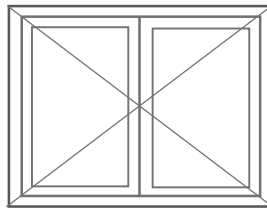
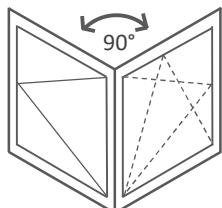
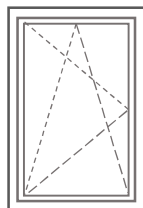
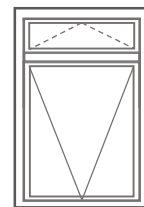
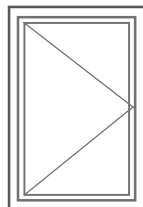
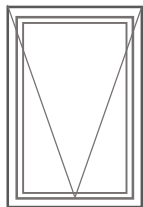
The window comes with a unique safety catch that keeps the window intact even when an extremely high wind or cyclone hits when it is open. The all-new engagement catch, prevents repeated banging, in the event of high winds while the window is left open.

Burglar resistance

This system offers burglar resistance of Class RC1 giving you peace of mind against theft.

Design typology

Side hung, top hung, tilt/turn, bottom hung



System data, open-out

Max. 1300mm

Vent width (SH)

Max. 1800 mm

Vent height (SH)

Up to 130 kg

Vent weight (SH)

6 – 42 mm

Glass thickness

Min. 84mm

Face width

Max. 1800mm

Vent width (TH)

Max. 2000 mm

Vent height (TH)

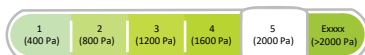
Up to 160 kg

Vent weight (TH)

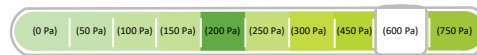
Schueco certified performance



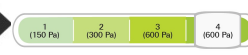
Windload resistance
Class C5- 2000 Pa



Water-tightness
Class 9A- 600 Pa



Air-permeability
Class 4- 600 Pa



The Schueco advantage

An integrated design, materials and service approach to deliver the highest global standards to your home



Design rigor & philosophy

Each system from Schueco brings 70 years of global experience in structural detailing and design innovation.



High-performance materials & processes

High-EPDM-content gasket with peroxide curing technology, integrated drainage system, and custom brush seal, all contribute to best-in-class air, water, wind and acoustic performance.



Accessory specifications & testing

Engineered, high-quality materials designed for smooth operation, corrosion resistance and durability with meticulous testing of all components, ensure consistent long-term performance.



Last-mile training and support

Schueco provides in-depth technical and hands-on training to the fabricator partners and certify them to deliver outstanding buildings.

Schueco - System solutions for windows, doors and façades

Schueco products are extensively used all over the world and meet the highest requirements of design, comfort, security and energy efficiency. Headquartered in Bielefeld, the Schueco Group has more than 6,330 employees worldwide and strives to be the industry leader in terms of technology and service today and in the future. The company is active in more than 80 countries and works together with over 40,000 fabricators, developers, architects and investors.



Registered office, Mumbai

Schueco India Private Limited
WeWork Chromium, Office No. 01A104,
JVLR, Raje Sambhaji Nagar, Andheri (East),
Mumbai, Maharashtra - 400 076
Phone: +91 22 678 689 89

Regional office, Bangalore

Schueco India Private Limited
Unit No.201, August Center BBMP Khatha No.
937/138 & 139/3B/1 Kempe Gowda International
Airport Road, Yelahanka, Bangalore - 560 064
Phone: +91 80 666 989 89

Regional office, New Delhi

Schueco India Private Limited
Office number 318, Tower B DLF Towers,
Jasola, New Delhi - 110 025
Phone: +91 11 694 089 89